



Built and qualified to MIL-T-81714E, DME wire splices provide a reliable positive and maintainable connection for two and four wire applications. All use the standard M39029/1 pin contact. The new D environmental class splice supersedes part numbers of the preceding A, B, and C environmental classes thus eliminating the cumbersome multiple environmental class system.

PERFORMANCE SPECIFICATIONS

DIELECTRIC WITHSTANDING VOLTAGE:

Sea Level: 1,500 Volts AC (RMS)
At 70,000 ft: 200 Volts AC (RMS)

INSULATION RESISTANCE

5,000 megohms at 25 C.

TEMPERATURE:

Operative at -65 C to +200 C.

FLUID COMPATABILITY:

Method 1016 of MIL-STD-1344.

CURRENT RATING:

Contact size 22-5 amps, size 20-7.5 amps.
size 16-13 amps, size 12-23 amps.

MOISTURE RESISTANCE:

Method 1002, Type II of MIL-STD-1344.

THERMAL SHOCK

Per MIL-STD-1344 Test Condition A.

*QPL Authorization NAC 29.15/04-12-96.

CONTACT RETENTION:

| Contact Size | Axial Load |
|--------------|-------------|
| 22 | 12 lbs. min |
| 20 | 20 lbs. min |
| 16 | 25 lbs. min |
| 12 | 30 lbs. min |

GROMMET SEALING RANGE:

(MIL-T-81714, Table I)

| Contact size | Max. Wire O.D. | Min. Wire O.D. |
|--------------|----------------|----------------|
| 22 | .060 | .030 |
| 20 | .083 | .040 |
| 16 | .109 | .065 |
| 12 | .142 | .097 |

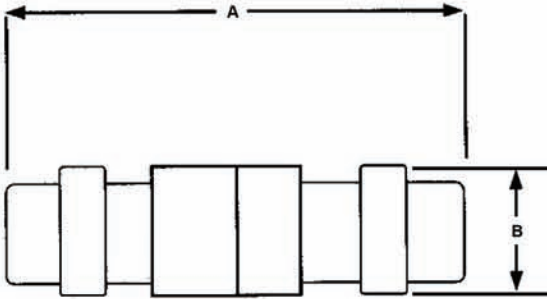
OTHER TESTS PERFORMED:

Vibration, Mechanical Shock, Altitude Immersion, Temperature Life, all per MIL-T-81714E.



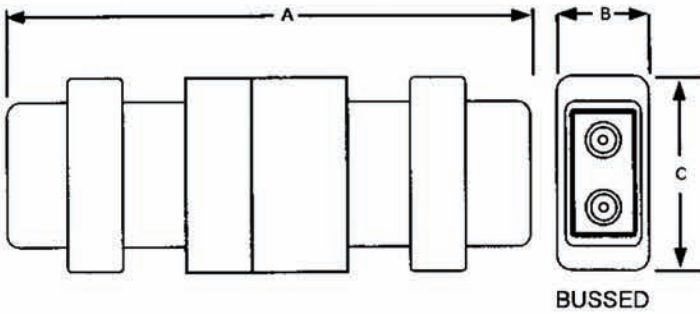
MIL-T-81714E SERIES I SPLICES

IN-LINE JUNCTIONS



| MILITARY PART NUMBER | CONTACT SIZE | A MAX. | B MAX. |
|----------------------|--------------|--------|--------|
| M81714/11-22D | 22 | 1.310 | .250 |
| M81714/11-20D | 20 | 1.434 | .250 |
| M81714/11-16D | 16 | 1.452 | .281 |
| M81714/11-12D | 12 | 1.922 | .369 |

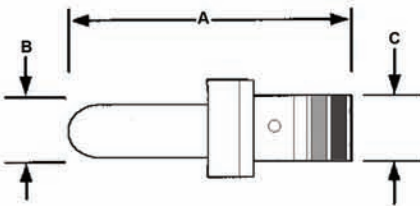
Grommet Color: Blue



| MILITARY PART NUMBER | CONTACT SIZE | A MAX. | B MAX. | C MAX. |
|----------------------|--------------|--------|--------|--------|
| M81714/12-22D-1 | 22 | 1.322 | .275 | .400 |
| M81714/12-20D-1 | 20 | 1.428 | .275 | .400 |
| M81714/12-16D-1 | 16 | 1.428 | .300 | .500 |

Grommet Color: Blue

CONTACTS



| CONTACT SIZE | WIRE GAUGE | MILITARY CONTACT P/N | A MAX. | B MAX. | C MAX. |
|--------------|------------|----------------------|--------|--------|--------|
| 22 | 22-26 | M39029/1-100 | .418 | .063 | .051 |
| 20 | 20-24 | M39029/1-101 | .418 | .063 | .078 |
| 16 | 16-20 | M39029/1-102 | .501 | .078 | .105 |
| 12 | 12-16 | M39029/1-103 | .501 | .095 | .153 |

ASSEMBLY TOOLS

| CONTACT SIZE | MILITARY CONTACT P/N | CRIMP TOOL | CRIMP TOOL POSITIONER | INSERTION/EXTRACTION TOOL | SEALING PLUGS |
|--------------|----------------------|-------------|-----------------------|---------------------------|---------------|
| 22 | M39029/1-100 | M22520/2-01 | M22520/2-11 | M81969/14-02 | MS27488 |
| 20 | M39029/1-101 | M22520/1-01 | M22520/1-02 Red | M81969/14-02 | MS27488 |
| | | M22520/2-01 | M22520/2-11 | | |
| 16 | M39029/1-102 | M22520/1-01 | M22520/1-02 Blue | M81969/14-03 | MS27488 |
| 12 | M39029/1-103 | M22520/1/01 | M22520/1-02 Yellow | M81969/14-04 | MS27488 |

www.dmeelectronics.com