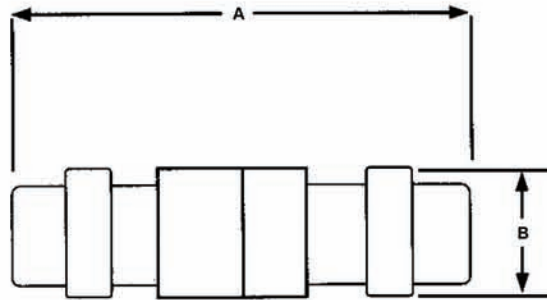




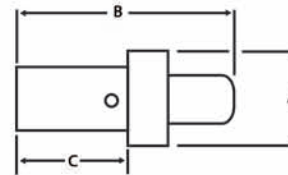
JIFFY JUNCTIONS



PART NUMBER CROSS REFERENCE

DME Part Number	Deutsch Part Number	$\begin{matrix} + \\ - \end{matrix} A$ ±.060	$\begin{matrix} + \\ - \end{matrix} B$ ±.030
DSE-22-01	TSE-22-01	1.250	.200
DSE-20-01	TSE-20-01	1.370	.250
DSE-16-01	TSE-16-01	1.370	.275
DSE-12-01	TSE-12-01	1.650	.380

CONTACTS AND ASSEMBLY TOOLING



DME Part Number	DEUTSCH Part Number	CONTACT Size	$\begin{matrix} + \\ - \end{matrix} A$ ±.010	$\begin{matrix} + \\ - \end{matrix} B$ ±.010	C Min.	Wire Range	Sealing Range Min. O.D.	Max. O.D.	Insert & Extract Tool Number	Crimp Tool
1841-22	100060-56	22	.058	.320	.145	26 24 22	.033	.054	M15570 -22-1	MH800- K 127 Daniels
1841-20	1841-1-5620	20	.101	.281	.165	24 22 20	.040	.083	M15570 -20	15500 -20-7
1841-16	1841-1-5616	16	.131	.381	.250	20 18 16	.068	.103	M15570 -16	15500 -16-7
1841-12	1841-1-5612	12	.188	.418	.252	14 12	.106	.158	M15570 -12	15500 -12-7

* Reduced Crimp Barrel Contacts Available Upon Request