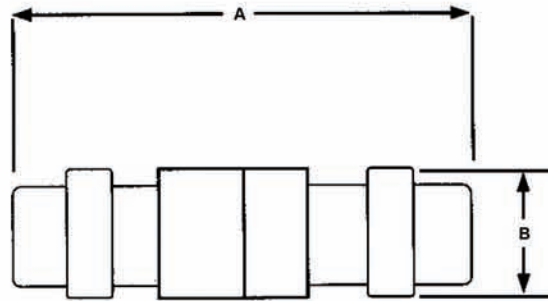




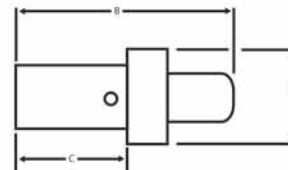
## JIFFY JUNCTIONS



### PART NUMBER CROSS REFERENCE

DME Part Number	Deutsch Part Number	$\begin{matrix} + \\ A \\ - \\ .060 \end{matrix}$	$\begin{matrix} + \\ B \\ - \\ .030 \end{matrix}$
DSE-22-01	TSE-22-01	1.250	.200
DSE-20-01	TSE-20-01	1.370	.250
DSE-16-01	TSE-16-01	1.370	.275
DSE-12-01	TSE-12-01	1.650	.380

### CONTACTS AND ASSEMBLY TOOLING



DME Part Number	DEUTSCH Part Number	CONTACT Size	$\begin{matrix} + \\ A \\ - \\ .010 \end{matrix}$	$\begin{matrix} + \\ B \\ - \\ .010 \end{matrix}$	C Min.	Wire Range	Sealing Range Min. O.D.	Sealing Range Max. O.D.	Insert & Extract Tool Number	Crimp Tool
1841-22	100060-56	22	.058	.320	.145	26 24 22	.033	.054	M15570-22-1	MH800-K 127 Daniels
1841-20	1841-1-5620	20	.101	.281	.165	24 22 20	.040	.083	M15570-20	M22520/2-01
1841-16	1841-1-5616	16	.131	.381	.250	20 18 16	.068	.103	M15570-16	M22520/1-01
1841-12	1841-1-5612	12	.188	.418	.252	14 12	.106	.158	M15570-12	15500-12-7

\* Reduced Crimp Barrel Contacts Available Upon Request